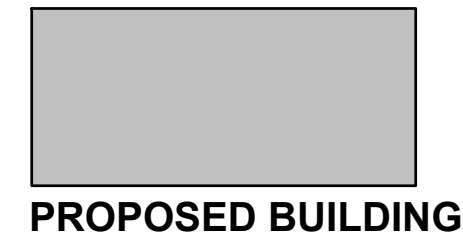
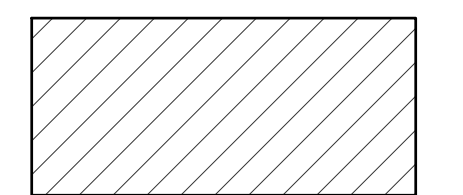


LEGEND:

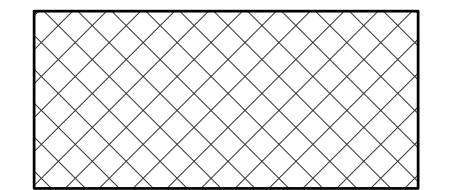


PROPOSED BUILDING



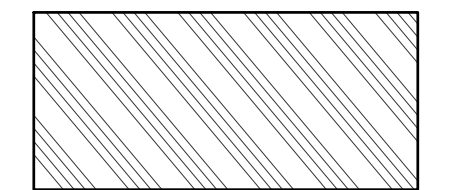
REGULAR DUTY ASPHALT PAVEMENT

ITEM 441 - 1 1/2" ASPHALT CONCRETE, SURFACE COURSE, TYPE 1, (448) PG 64-22 ON
 ITEM 441 - 2 1/2" ASPHALT CONCRETE, INTERMEDIATE COURSE, TYPE 2, (448) ON
 ITEM 304 - 6" AGGREGATE BASE (2 EQUAL LIFTS) ON
 ITEM 204 - SUBGRADE COMPACTION



STANDARD DUTY CONCRETE PAVEMENT

ITEM 452 - 5" NON-REINFORCED CONCRETE PAVEMENT WITH 3 LBS/CY OF EITHER EUCLID CHEMICAL TUFSTRAND SF, FORTA FERRO FIBRILLATED MACROFIBERS OR APPROVED EQUIVALENT MEETING ASTM C 1116 TYPE 3, MINIMUM 2" LENGTH, ASPECT RATIO 50 TO 90. CONTRACTOR SHALL CONTACT THE FIBER MANUFACTURER'S SUPPLIER 48 HOURS PRIOR TO ORDERING THE FIRST BATCH OF CONCRETE FOR APPROPRIATE MIXING AND FINISHING PROCEDURES ON
 ITEM 304 - 6" AGGREGATE BASE ON
 ITEM 204 - SUBGRADE COMPACTION



HEAVY DUTY CONCRETE PAVEMENT

ITEM 452 - 8" NON-REINFORCED CONCRETE PAVEMENT WITH 3 LBS/CY OF EITHER EUCLID CHEMICAL TUFSTRAND SF, FORTA FERRO FIBRILLATED MACROFIBERS OR APPROVED EQUIVALENT MEETING ASTM C 1116 TYPE 3, MINIMUM 2" LENGTH, ASPECT RATIO 50 TO 90. CONTRACTOR SHALL CONTACT THE FIBER MANUFACTURER'S SUPPLIER 48 HOURS PRIOR TO ORDERING THE FIRST BATCH OF CONCRETE FOR APPROPRIATE MIXING AND FINISHING PROCEDURES ON
 ITEM 304 - 6" AGGREGATE BASE ON
 ITEM 204 - SUBGRADE COMPACTION

PAVEMENT STRIPING NOTES:

ANY PROPOSED PAVEMENT MARKING SHALL BE STRIPED AS PART OF THIS WORK.

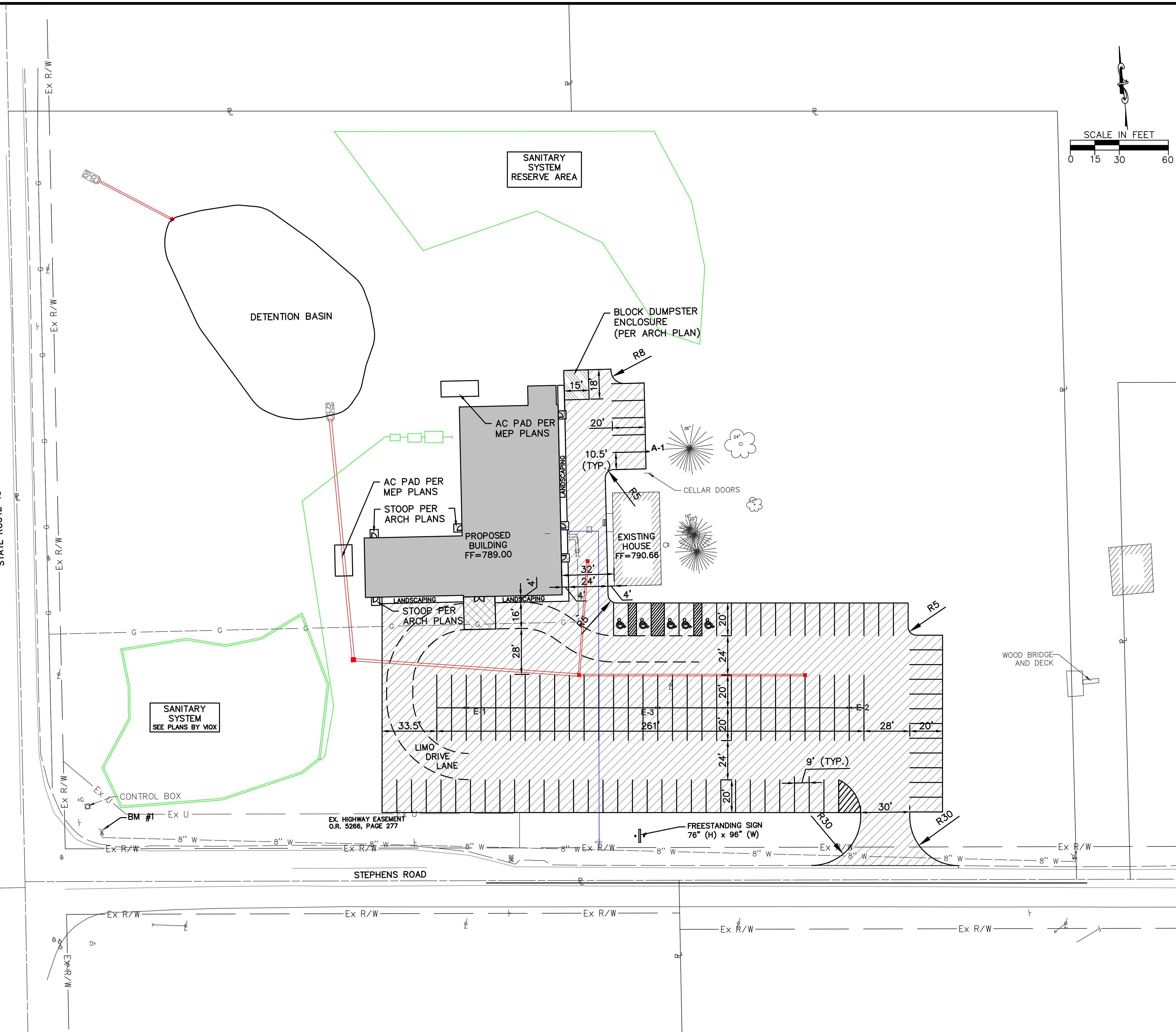
ALL PAVEMENT MARKING LINES SHALL BE WHITE OR YELLOW (DO NOT REQUIRE REFLECTOR BEADS) AND SHALL CONSIST OF 4" WIDE LINES.

ALL PAVEMENT MARKINGS SHALL BE PER ODOT ITEM 640 AND 642. ALL PAVEMENT MARKINGS TO BE TYPE 1, UNLESS APPLICATION IS REQUIRED WHEN AIR AND PAVEMENT TEMPERATURES ARE BETWEEN 35 °F AND 50 °F, THEN OBTAIN APPROVAL FROM THE OWNER AND APPLY ONLY PRE-QUALIFIED TYPE 1A COLD WEATHER TRAFFIC PAINT MATERIALS PER ITEM 642 AND 740.

ALL MARKING LAYOUT AND COLOR SHALL BE APPROVED BY THE OWNER'S REPRESENTATIVE PRIOR TO INSTALLATION.

NOTES:

- 1) ALL DIMENSIONS INVOLVING CURBING ARE TO THE FACE OF CURB, UNLESS OTHERWISE NOTED.
- 2) INSTALL DRIVEWAY PER WARREN COUNTY STANDARDS.
- 3) CONTRACTOR TO VERIFY EXACT LOCATION, DEPTH AND SIZE OF UTILITIES PRIOR TO CONSTRUCTION. CONTRACTOR SHALL NOTIFY OWNER OF ANY CONFLICTS PRIOR TO THE INSTALLATION OF UTILITIES.
- 4) CONTRACTOR TO FOLLOW ALL PERMIT REQUIREMENTS AND SPECIFICATIONS TO INSTALL THE PROPOSED DEVELOPMENT INCLUDING COORDINATING THE INSTALLATION WITH LOCAL OFFICIALS AS NEEDED AND/OR REQUIRED.
- 5) CONTRACTOR TO COORDINATE ALL WORK WITH THE OWNER AS NEEDED/REQUIRED.



SIDNEY, OHIO 937.497.0200
 LOVELAND, OHIO 513.239.8554
 PORTLAND, INDIANA 260.766.2500
 WWW.CHOICEONEENGINEERING.COM

**THE WYNSOR
 WARREN COUNTY
 DIMENSIONING AND PAVEMENT PLAN**

REVISIONS:
FILE NAME DIMENSION
DRAWN BY KHC
CHECKED BY MLS
PROJECT No. WARHAM1802
DATE 09-27-2018
SHEET NUMBER 8 OF 17